



# Tacoma Mall Neighborhood Greening Programs

## BACKGROUND

The Tacoma Mall neighborhood includes approximately 575 acres in southwestern Tacoma. The area has been designated as a Regional Growth Center (RGC) by the City of Tacoma and the Puget Sound Regional Council and is anticipating rapid growth and development in upcoming years.

As such, the Tacoma City Council approved the Tacoma Mall Neighborhood Subarea Plan in May of 2018, with the goal of establishing “innovative planning and policy actions to help the area achieve its potential as a thriving, livable, walkable and transit-ready urban neighborhood.”

In 2019, through a multi-year collaborative process with the City’s Environmental Services Department, partners, and the community, the Urban Forest Management Plan (UFMP) was developed to achieve goals of urban forest sustainability, management, and equity for all Tacomans and future generations. The UFMP provides a road map for actions that move towards a goal of a healthy, thriving 30% overall tree canopy coverage by 2030.



*2019 Inventory of Tacoma Mall right-of-way trees and potential planting locations*

Acting on these plans, the City of Tacoma, Pierce County, and a team of regional community partners have a number of greening opportunities for the Tacoma Mall community. These fall into the following broad categories:

1. Madison District Green Stormwater Infrastructure Project
2. Tree Replacement & Planting
3. Landscaping & Depave
4. Grant Opportunities

This document provides an overview of options, available to those living in the Tacoma Mall neighborhood.

## How to Get Involved?

Please visit [treesfortacoma.org](https://treesfortacoma.org) for the latest information on greening activities in the Tacoma Mall neighborhood and how you can participate.



*Unhealthy “topped” tree*

## CITY STAFF CONTACT

Michael Carey  
Urban Forest Program Manager  
(253) 404-6989  
[mcarey@cityoftacoma.org](mailto:mcarey@cityoftacoma.org)

# Madison District Green Stormwater Infrastructure (GSI) Project

## What is the Madison District GSI Project?

The City of Tacoma Environmental Services Department received a grant from the Washington State Department of Ecology and has partnered with the Public Works Department and Tacoma Water to replace the streets and utilities in the Madison District of the Tacoma Mall neighborhood.

The Madison District GSI Project is intended to improve neighborhood streets, fix drainage problems, and protect Puget Sound from polluted runoff by installing permeable pavement. Permeable pavement allows rainwater falling on streets to soak into the ground and eventually, to the groundwater.

Replacing 16 residential streets (in need of improvement) with permeable pavement will improve the driving surface and help with water quality by infiltrating rainwater from the road surface. Currently, rainwater that is collected on the road surface in this neighborhood flows into catch basins, is piped to Flett Creek, Chambers Creek, and ultimately to Puget Sound. When this untreated rainwater (also known as stormwater) is piped to these bodies of water, it carries harmful pollutants from cars and human activities and empties these pollutants into our water. This has a negative effect on plants, animals, humans, and the entire ecosystem.

The project includes more than just replacing the surface of the streets. See the table below for a more detailed list.

### DID YOU KNOW?

Permeable pavement allows the rainwater falling on streets or sidewalks to soak into the ground. Water quality is improved as the soil beneath the pavement filters pollutants, and local flooding is reduced by returning that water back into the soil.



Permeable pavement

Elements of the Project	Description
Permeable Pavement	The permeable pavement in this project will infiltrate 28 acres of stormwater, rather than collecting it in a piped system. This infiltration process will allow pollutants to be filtered out by the soils, and clean stormwater will combine with the groundwater, helping to recharge the South Tacoma Aquifer; a supplemental source of drinking water for the City of Tacoma.
Multi-Use Path	A 10-foot wide multi-use path is part of a larger plan to increase walkability by eventually building a looped path called the Loop Road. The Loop Road section will be located on South 45th St from Pine St. to Lawrence St.
Continuous Sidewalks	Many blocks are currently lacking a sidewalk, with inconsistent stretches from street to street. In the 16 block project area, all streets will have continuously connected sidewalks.
Street Trees	The right-of-way within the Madison District has a very low tree canopy coverage, leaving the streets and walkways exposed to both heat and rain. Street trees provide shade, aid in stormwater management, and filter pollution from the air.
Sewer Pipes	Aging sewer pipes beneath the roadway will be upgraded.
Drinking Water Pipes	All of the water mains and service lines within the right-of-way of the project footprint will be replaced.







Madison District Green Stormwater Infrastructure Project Map



Bioretention (rain garden)  
Pacific Avenue, Tacoma

## Madison District GSI

Want to Learn More?

Please visit [Madison District Green Infrastructure Project - City of Tacoma](https://www.cityoftacoma.org/cms/One.aspx?portalId=201695&pageId=169)

Full web link: <https://www.cityoftacoma.org/cms/One.aspx?portalId=201695&pageId=169>



# Tree Replacement & Planting

## Why Trees Matter in Neighborhoods

A neighborhood's trees are part of a green infrastructure system that provides a range of benefits. Trees improve our urban spaces by beautifying neighborhoods, reducing the urban heat island effect, cleaning the air, restricting polluted runoff during storms, and providing shade that lengthens the life of streets and sidewalks. On hot days, shadier streets also mean lower neighborhood temperatures, which can reduce the air pollution that increases asthma rates.

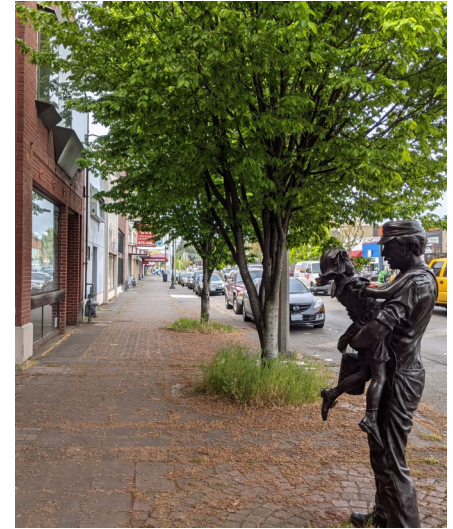
## How Do I Get More Trees?

The Tacoma Mall community has access to a variety of organizations and programs that provide tree resources. See the table below for a detailed list.



## Why Giveaway Trees?

Resources such as parks and green spaces aren't evenly distributed across the city. This lack of access is directly associated with negative health outcomes. In order to get to 30% tree canopy by 2030, we need to add 4 Point Defiance's worth of trees and focus that planting most in historically underserved communities.



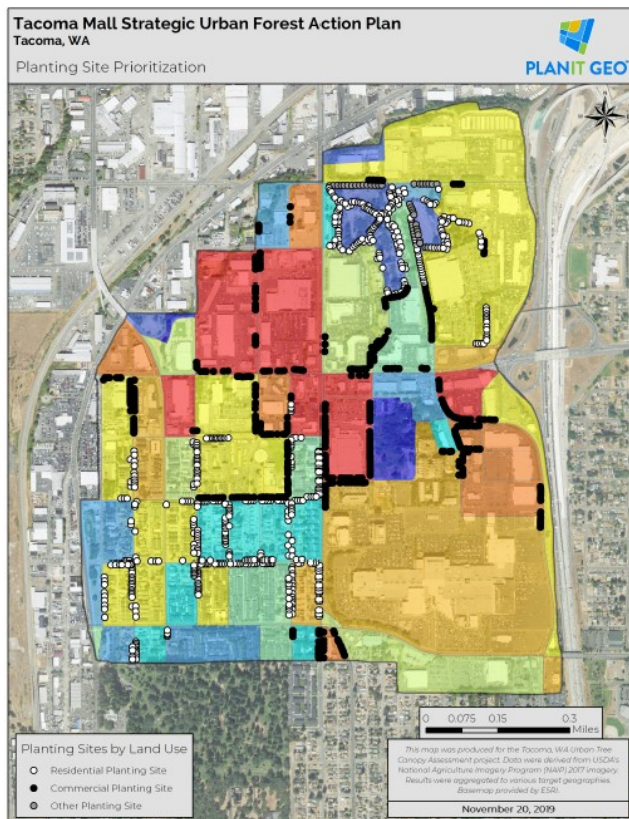
*South Tacoma Business District*

Tree Planting Programs	Program Description
<b>Grit City Trees</b> (Early Fall)	The <b>City of Tacoma's</b> tree giveaway program, Grit City Trees are free to eligible Tacoma community members. There are individual and group application options. Each tree also comes with TAGRO ( <a href="http://cityoftacoma.org/tagro">cityoftacoma.org/tagro</a> ) and materials to stake the tree in place. Applications for the program open around October each year. To learn more, please visit <a href="http://cityoftacoma.org/gritcitytrees">cityoftacoma.org/gritcitytrees</a>
<b>Tree Coupon Program</b> (Oct 1st to March 31st)	A partnership of the <b>City of Tacoma Urban Forestry</b> , <b>Tacoma Public Utilities</b> , and the <b>Puyallup Watershed Initiative Forest Community of Interest</b> , tree coupons are valid for \$30 off each tree purchased, up to three trees per coupon, at select local tree retailers. These trees are for residential property and may be planted on your private property or in right-of-way (such as planting strips) abutting your property. The application period for coupons each year is from Oct 1st-March 15th and coupons are valid through March 31st. There is no cost to obtain a coupon. Limited to one coupon per household. More information can be found at: <a href="http://cityoftacoma.org/treecoupons">cityoftacoma.org/treecoupons</a>
<b>Urban Tree Sale</b> (Late Spring)	<b>Pierce Conservation District's</b> Urban Tree Sale helps residents across Pierce County plant trees around their homes and along streets through significantly discounted trees, planting resources, education, and ongoing support. The application opens around June each year. To learn more, please visit: <a href="http://piercedcd.org/245/Urban-Tree-Planting">piercedcd.org/245/Urban-Tree-Planting</a>
<b>Tree Giveaways</b>	Both <b>Tacoma Tree Foundation</b> and <b>Pierce County Parks</b> host a number of tree giveaway events throughout the year at locations across the city and county. For information on the next Tacoma Tree Foundation tree giveaway, follow <a href="https://www.instagram.com/tacomatreefoundation">@tacomatreefoundation</a> on Instagram and Facebook or visit <a href="http://tacomatreefoundation.org">tacomatreefoundation.org</a> . To learn more about Pierce County Parks' Giving Tree events, please visit: <a href="http://www.piercecountywa.gov/4080/Pitch-In-For-Parks">www.piercecountywa.gov/4080/Pitch-In-For-Parks</a>





Young trees with watering bags along the sidewalk near South Park



Priority tree planting locations identified in Tacoma Mall Strategic Urban Forest Management Plan, 2020

### DID YOU KNOW?

As a rule of thumb, taller trees are recommended where there is appropriate growing space to accommodate them. Taller trees can be “limbed up” to provide clearance for people to walk, and clear sightlines along streets.





# Landscaping & Depave

## Why Green Infrastructure Matters

### *Puget Sound Health*

Paved surfaces are the number one contributor to stormwater pollution. Polluted runoff, as it flows over paved surfaces, picks up and carries pollutants to local streams and the Puget Sound. By finding and removing unnecessary pavement (transforming them into green space) we allow runoff to soak into the soil instead of washing pollutants into storm sewer pipes draining to Puget Sound.

### *Urban Heat Islands*

Heat is created by energy from all the people, transportation and paved surfaces in a City. “Urban heat islands” are created because urban infrastructure (building and paving materials) is very good at insulating, or holding in heat. This insulation makes the areas around buildings warmer and during the summer can raise nearby temperatures considerably. This excess heat coupled with higher air pollution levels associated with urban heat islands can have serious negative health impacts on humans by contributing to general discomfort, respiratory difficulties, heat cramps and exhaustion, heat stroke, and heat-related mortality.

## Depave and Rain Gardens

In Puget Sound, every 10,000 SF of asphalt generates about 240,000 gallons of stormwater each year. Depaving and Rain Gardens offer a solution to reduce the impact of stormwater by stopping pollutants and filtering onsite instead of them running into stormdrains untreated and then into Puget Sound.

## How Can I Get Involved?

See the table below for Depave and Landscaping Programs.

## DID YOU KNOW?

When rain falls in Tacoma and other urban areas, it carries pollutants like pet waste, car leaks and landscaping chemicals from streets and parking lots directly to local waterways. Stormwater runoff is one of the biggest sources of pollution in the Puget Sound, leading to urgent ecological threats like the serious decline in Salmon and Orca populations.



*Point Defiance regional treatment stormwater sample, Tacoma*

Depave and Landscaping Programs	Program Description
Depave	<b>Pierce Conservation District (PCD)</b> works with community groups to transform paved urban areas into green space. The process begins with community nominations of spaces to be depaved. Then, the design team works with community members to develop a plan before the community pavement removal and planting events take place. PCD helps facilitate the initial watering and establishment of the green space, after which time the community group is responsible for ongoing care and maintenance. To learn more, please visit: <a href="http://www.pierced.org/246/Depave-Puget-Sound">www.pierced.org/246/Depave-Puget-Sound</a>
Raingarden Assistance	<b>Pierce Conservation District</b> staff work with homeowners each year to design and install rain gardens on their property. Raingardens allow stormwater to filter back into the ground instead of collecting pollutants and flowing to streams, rivers, and Puget Sound. For more information or to schedule a site visit to your property contact Melissa at <a href="mailto:melissab@piercecodycd.org">melissab@piercecodycd.org</a> .





Volunteers with PCD installing a raingarden in Tacoma



McKinley District Depave, Tacoma  
BEFORE



Sprague Depave, Tacoma  
DURING



McKinley District Depave, Tacoma  
DURING



Landscaping of a neighborhood street, Seattle



# Grant Opportunities

## What Financial Resources Are Available?

Reimagining landscaping and streets to create a more healthy and sustainable neighborhood can be cost-prohibitive. There are a variety of organizations offering assistance through grant opportunities for individuals and neighborhoods looking to initiate community greening projects.

Grant Opportunities	Program Description
<b>Make A Splash</b>	<b>City of Tacoma Environmental Services</b> awards up to \$48,000 a year in environmental grants to help educate residents and protect and restore local surface water resources. A reimbursable maximum award amount up to \$4,000 is open to anyone considering a project within Tacoma city limits. Grants are designed for projects that have a strong stormwater pollution prevention message or provide a stormwater benefit. Submitted projects must meet at least one of the program goals of: education, surface water protection, or habitat restoration and tree planting. To learn more, please visit: <a href="http://www.cityoftacoma.org/makeasplash">www.cityoftacoma.org/makeasplash</a>
<b>Sustainability Small Grants</b> (Applications reviewed quarterly)	<b>City of Tacoma Environmental Services</b> provides a reimbursable maximum award amount of up to \$5,000 to eligible projects within Tacoma city limits that help protect and restore our environment. Projects that help educate residents and/or businesses on the environment and sustainable practices are encouraged to apply. Strong grant applications will demonstrate a benefit to one or more of the three Environmental Services utilities: Surface Water, Solid Waste, and Wastewater. To learn more, please visit: <a href="http://www.cityoftacoma.org/government/city_departments/environmentalservices/grants_and_sponsorships/sustainability_small_grant">www.cityoftacoma.org/government/city_departments/environmentalservices/grants_and_sponsorships/sustainability_small_grant</a>
<b>Puyallup White River Watershed and Chambers-Clover Creek Watershed Small Grants</b> (Grants awarded yearly)	A partnership with <b>Pierce County</b> and the <b>Stormwater Community of Interest (SCOI)</b> , a part of the <b>Puyallup Watershed Initiative</b> , with grant administration provided by the <b>Greater Tacoma Community Foundation</b> , and the <b>Puyallup River Watershed Council</b> , this program provides grants up to \$2,500 to non-profit organizations, schools, teachers, businesses, and individuals wishing to enhance water quality and habitats in the Puyallup-White River Watershed (WRIA 10). For more information, please visit: <a href="http://www.piercecountywa.gov/1872/Small-Grants-Program">www.piercecountywa.gov/1872/Small-Grants-Program</a>



*Stewartia in ROW*



*Impervious surfaces in ROW*







Bioretention planter with public art - Bell Street, Seattle

Grant Opportunities	Program Description
<b>Alliance for Community Trees Grants</b>	A community-based wing of the <b>Arbor Day Foundation</b> , the Alliance for Community Trees is a member-based organization that works with individuals and community organizations to distribute trees and resources to support tree-centric community projects. For more information, please visit: <a href="https://arborday.org/benefits-of-membership-alliance-for-community-trees">Benefits of Membership - Alliance for Community Trees at arborday.org</a>



Green Stormwater Infrastructure, Pacific Ave, Tacoma

## How to Get Involved?

Please visit [treesfortacoma.org](https://treesfortacoma.org) for the latest information on greening activities in the Tacoma Mall neighborhood and how you can participate.

Visite [treesfortacoma.org](https://treesfortacoma.org) para obtener la información más reciente sobre las actividades ecológicas en el vecindario de Tacoma Mall y cómo puede participar.

타코마 몰 인근의 녹화 활동과 참여 방법에 대한 최신 정보는 [treesfortacoma.org](https://treesfortacoma.org)를 방문하십시오.

Vui lòng truy cập trang [treesfortacoma.org](https://treesfortacoma.org) để biết thông tin mới nhất về các hoạt động phủ xanh trong khu vực trung tâm thương mại Tacoma và cách bạn có thể tham gia.